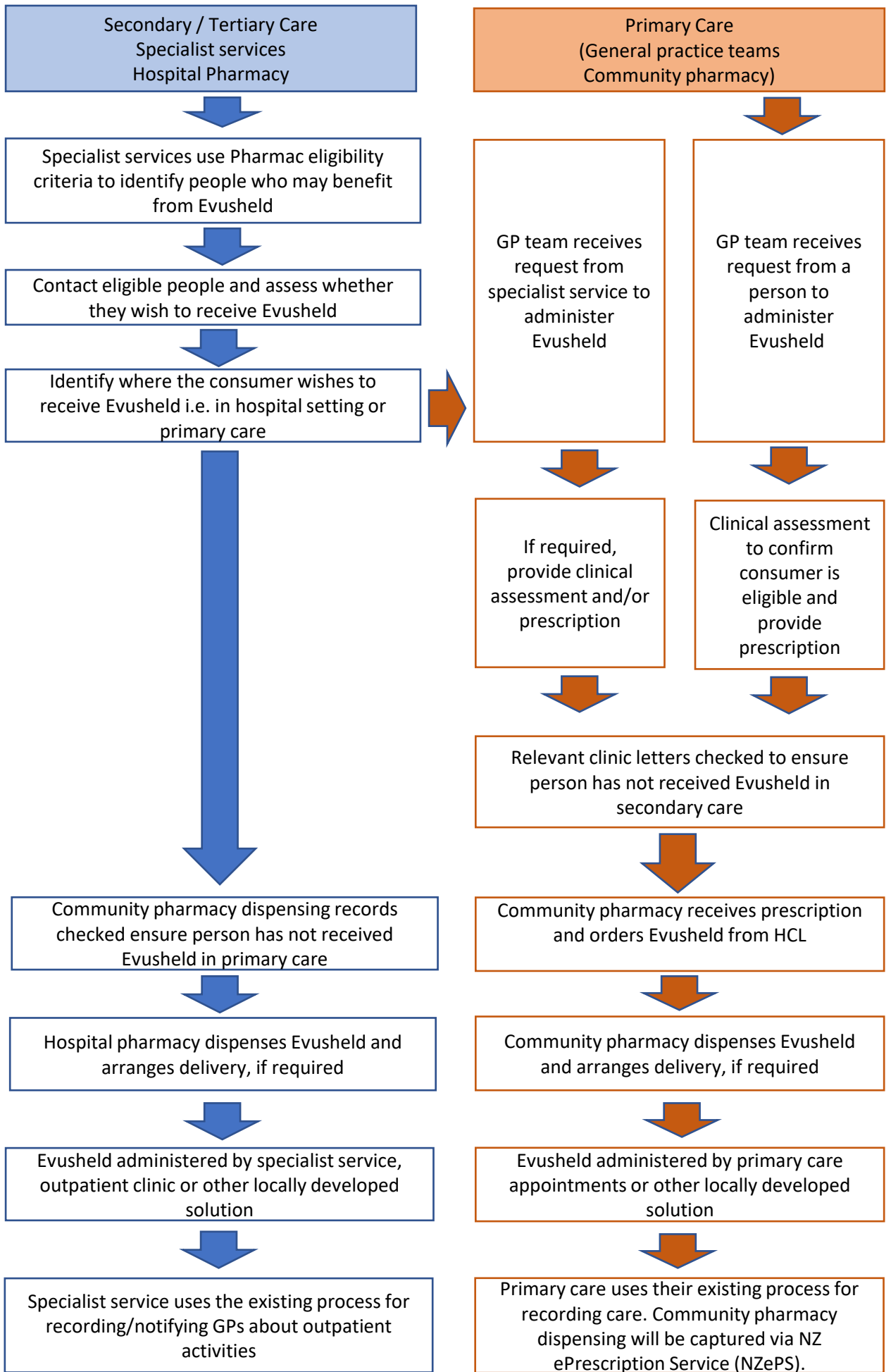


Evusheld Administration Process Overview Flowchart



Notes

- People who self identify as being eligible may contact their specialist service or GP team directly to request Evusheld.
- Adverse reactions need to be reported to CARM via existing processes.
- Assessment in primary care can be virtual or in person.
- Community pharmacies are to order Evusheld on an as required basis i.e. when they receive a prescription.
- Ensuring Evusheld is stored appropriately during transportation following dispensing sits with the community pharmacy.