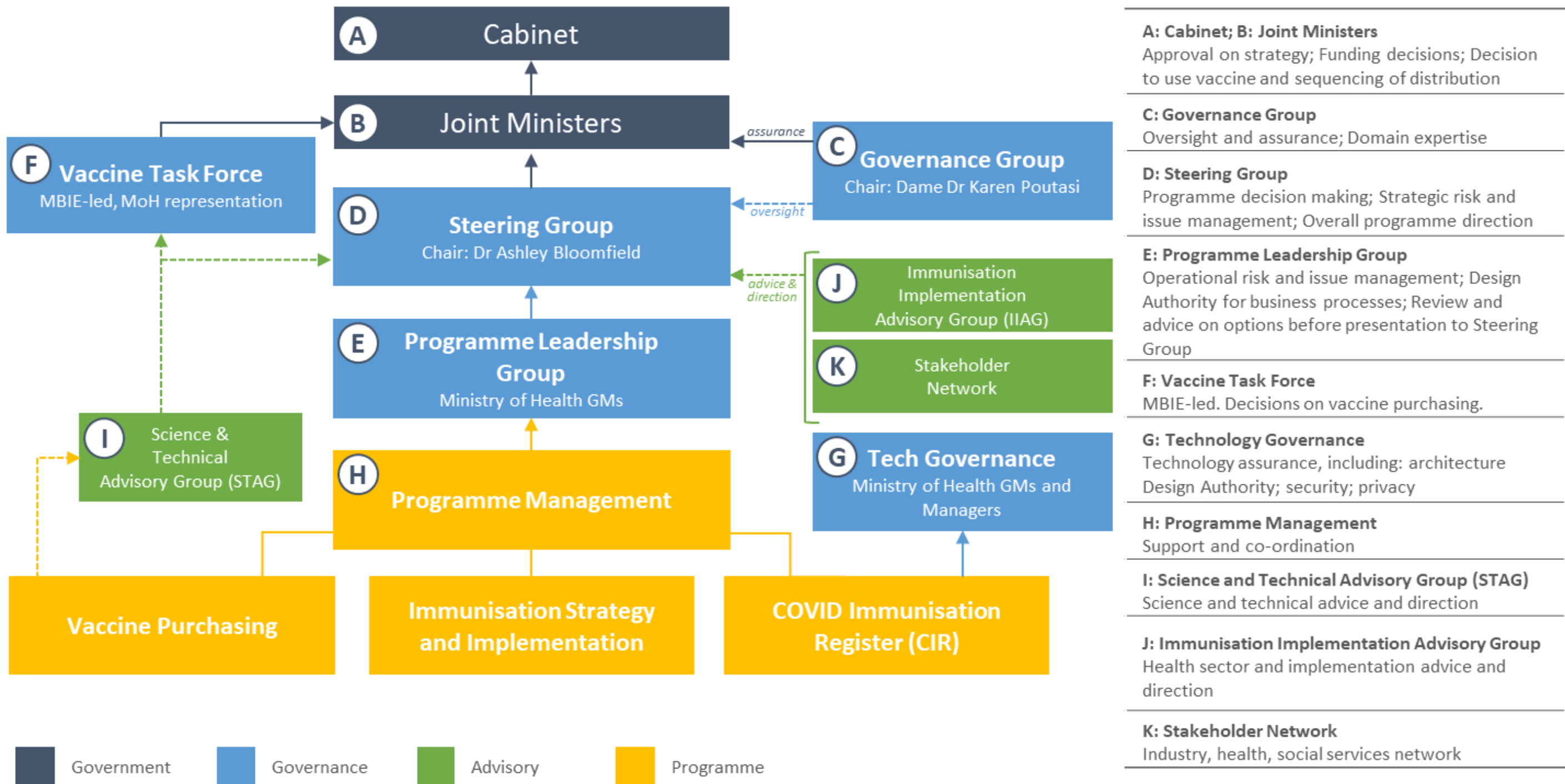


COVID Vaccine and Immunisation Programme

February 2021

Programme decision making structure



Programme overview

Programme Blueprint

The programme will support managing and preventing the risk of COVID-19 the longer-term economic, social and cultural recovery by:

- focusing all efforts on a safe and effective COVID-19 vaccine programme
- procuring a portfolio of vaccines that increases our likelihood of efficacy
- ensuring New Zealand and the Pacific have equitable and timely access to vaccines
- upholding and honouring Te Tiriti o Waitangi obligations.

Our Vision

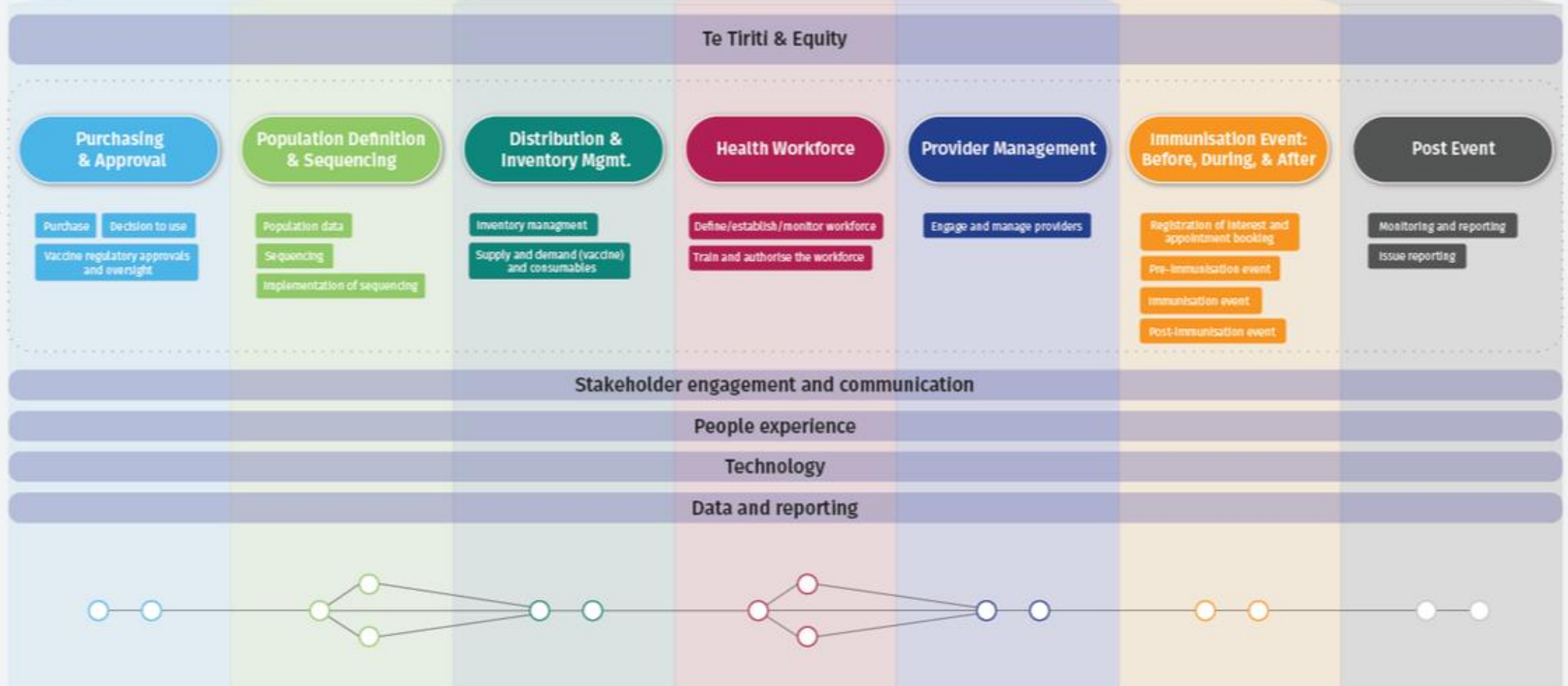
Our Foundation

7 Pillars

Sub Pillars

Our Enablers

The Golden Thread



Key points

- Ministry of Health is playing a central role in administering and coordinating the programme nationally with common tools, processes and data to ensure there is visibility of performance and progress
- Ministry is working in partnership with DHBs to coordinate delivery response
- Ensuring the response is equitable and applies the principles of Te Tiriti is foundational to the programme
- The vaccine will be free to all New Zealanders, and free to the vaccinator. No provider is expected to charge a patient a fee
- Distribution and inventory management will be managed by the Ministry of Health from two distribution centres – a new inventory management system is being developed that will help track and trace vaccines and their consumables
- A new technology solution has been developed to record COVID-19 vaccines (COVID-19 Vaccine Immunisation Register – CIR). The first iteration of the system will be available to support the roll-out
- A national public information campaign will be established, similar to the Unite against COVID-19 campaign
- The Ministry is considering how best to co-ordinate the rollout of a COVID vaccination programme alongside the annual influenza programme

Population sequencing

Sequencing the Roll out of COVID-19 Vaccines

It is likely that vaccines will become available in stages, which means we will need to consider the best way to sequence their delivery to provide the best protection for those who are at a higher risk of poor outcomes from COVID-19. We are preparing for three different scenarios for rolling out the vaccine, based on whether we are able to keep COVID-19 out of our borders or whether we are dealing with community transmission.

	Scenario One Low/no community transmission Aim: Prevent transmission	Scenario Two Clusters and controlled outbreaks Aim: Reduce transmission and protect people in close contact	Scenario Three Widespread community transmission Aim: Protect those most vulnerable to prevent illness and mortality
Group One First group of people to receive the vaccine in each scenario	<ul style="list-style-type: none"> Border and managed isolation & quarantine workforce Health workforce at highest risk of exposure to COVID-19 Household contacts of the above two groups 	<ul style="list-style-type: none"> Border and managed isolation & quarantine workforce Health workforce at highest risk of exposure to COVID-19 Population affected by the outbreak 	<ul style="list-style-type: none"> Older people (aged care residents, Māori and Pacific people, then others aged over 65 years) People under 65 with underlying conditions People living in long-term residential care settings
Group Two Second group of people to receive the vaccine in each scenario	<ul style="list-style-type: none"> High risk frontline health workforce High risk frontline public sector and emergency services 	<ul style="list-style-type: none"> High risk frontline health workforce High risk frontline public sector and emergency services 	<ul style="list-style-type: none"> High risk frontline health workforce High risk frontline public sector and emergency services Remaining frontline health workforce
Group Three Third group of people to receive the vaccine in each scenario	<ul style="list-style-type: none"> People in the community, including: <ul style="list-style-type: none"> Older people People with underlying conditions At risk health and social services workforce 	<ul style="list-style-type: none"> People in the community, including: <ul style="list-style-type: none"> Older people People with underlying conditions At risk health and social services workforce 	<ul style="list-style-type: none"> Remaining health and public sector workforce Other population groups

Workforce

- We are planning for an extra 2,000 – 3,000 full-time, or equivalent vaccinators to be trained and available throughout New Zealand
- The Ministry has partnered with IMAC to deliver education, training, and support for COVID-19 vaccinators. Training for COVID-19 vaccines will be available from mid-February (available only to those who will be delivering vaccinations in the initial stages)
- We are using the [COVID-19 Surge Workforce database](#) as a means of recording individuals who are willing to be involved as vaccinators. This could be any retired health professionals or others not currently in the health workforce that may want to volunteer. DHBs/providers will be able to access this pool as required.
- The vaccination course training costs are fully funded by the Ministry and will be free to the vaccinator